



Edna L. Abe

JUL 14, 1959 - JAN 27, 2023



Scan to Visit



MAUI MEMORIAL PARK
NAKAMURA MORTUARY
CEMETERY, CREMATION & FUNERAL

Table of Contents

| | |
|---------------------------|--------|
| Obituary | Page 3 |
| Events | Page 4 |
| Tribute Wall | Page 5 |
| Media | Page 7 |



Edna L. Abe

JUL 14, 1959 - JAN 27, 2023

Edna L. Abe, 63, of Kahului, Maui passed away peacefully at home in the loving care of her family on Friday, January 27, 2023. Edna was born in Wailuku on July 14, 1959 to the parents of Mariano and Leonora Guerrero. In the last few years, Edna brought smiles to the children of Pomaikai Elementary School as a crossing guard and as a security guard at Kahului and Wailuku Public Library. She also worked as a secretary at the Masons Union for over 20 years and as a bank teller at Bank of Hawaii for over 10 years. Edna made life-long friends throughout the years as a tennis player. She also kept active volunteering for AYSO, paddling, and hiking. She is survived by her mother, Leonora Guerrero; husband, Roy Abe; three children, Chelsey Souza (Justin), Cortney Clayton (Tederick), and Casey Abe (April); her siblings Imeda Barron, Jerry Guerrero, Nelly Guerrero, Henry Guerrero, and Tracy Guerrero; and four grandchildren with two more on the way. Services will be held on Monday, February 13th from 10 am-1:30 pm at Nakamura Mortuary with a private burial to follow.




Events

Edna L. Abe

JUL 14, 1959 - JAN 27, 2023

Memorial Visitation & Service


 **Monday**, February 13, 2023


 10:00 AM - 1:30 PM HST

 **Nakamura Mortuary and Crematory**
1218 Lower Main Street, Wailuku HI 96793



Cemetery Details

 **Maui Memorial Park**
450 Waiale Road, Wailuku HI 96793

 **808-495-4306**





Tribute Wall

Edna L. Abe

JUL 14, 1959 - JAN 27, 2023

JM

Jo Moyes posted:

Dear family of Edna, I send you all, Roy and your children, my condolences with the passing of cherished Edna. I played tennis with Edna for many years. We shared many great games on the court, together and as opponents. Tennis players love the game, but as much, its the camaraderie, conversations, laughs and friendships that keeps us showing up to play. Edna was brave and tough on the court, with wonderful shots to close the point, which left me in awe. My game got better playing with Edna. I will miss her, her laugh, and seeing her at the courts. I know her tennis community of friends will cherish her memory, and we will continue to share memories of Edna for a long time to come. With a tear in my eye, I'm saddened that she has passed way too young. I know Edna is in the heart of all. Again, my condolences. Regards, Jo Moyes

February 12 at 1:43 PM

DM

Donna Moore posted:

Aloha my name is Donna Moore and I had the honor of visiting Edna during her last few months here on Maui. I met Edna maybe 6 months ago through taking care of her mom and her and I had a connection it was pretty much immediate and it was like we've been friends forever we laughed I won't mention what we laughed about. One of the biggest similarities we shared was our birth date mine is July 7th 1959 Edna says July 14th 1959 class of '77 we both shared that we had the best high school years probably some of the fun est times ever in our lives. We never talked about her being sick. We mostly talked about other people and laughed Edna was like my sister. It was automatic the friendship we had was just automatic. I Miss Edna I miss my friend but I know that I'll see her again

February 12 at 11:01 AM

SH

Sharon Heintzman posted:

I am so sorry for your loss of Edna. She will surely be missed. I know this, God is near the broken hearted.

February 11 at 2:21 AM

LL

Liezl Lao shared a photo to the **Tribute Wall** album.

Edna will be greatly missed! She was a kind friend, always inviting me to tennis, hiking or getting together for hh. I'll always remember to hit 'cross court' because of you, my dear friend ❤️ Love u lots, Liezl Lao



February 10 at 10:40 AM



Tribute Wall

Edna L. Abe

JUL 14, 1959 - JAN 27, 2023



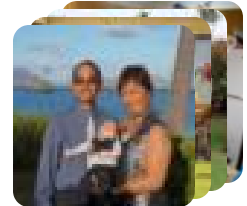
Stephanie Higa posted:

Edna was a classmate of mines.She was such a kind and sweet person.Until we meet again....aloha my beautiful friend.Stephanie (Iwamoto) Higa from Las Vegas❤️❤️❤️

February 9 at 7:37 AM



Nakamura Mortuary shared an album called **Memories Album.**



February 8 at 2:17 PM



Debra Lordan February 19 at 5:34 AM

Dear Family and Friends of Edna,I played evening tennis with Edna for many years and learned much from her along the way. She was a quiet, brave and fierce competitor who moved stealthily on the court for optimum offensive positioning. She left me and many opponents bewildered many times when we thought we had made the "perfect, un-returnable shot." But no. Edna was right there to calmly angling it away — her perfect signature shot that we all knew too well.She taught me more aggressive positioning (move up, move up!) and her words "follow the ball" echo in my head to this day. As her partner on the court, I did not want to disappoint with weak playing. A look from her told me if I was playing too defensively. But a smile from her after a good shot was a reward in itself, whether we were winning or losing. On both sides of the net, she made me a better player. Her strength gave me strength.Off the court, her serious demeanor melted into delightful banter and talk of family and friends. She was a gem. Edna, I am sorry you left us so soon. We miss you and will never forget you.Debra Lordan



Barbara Elizabeth Langshaw February 12 at 3:23 PM

To my wonderful friend, Edna who I first met on the Wells tennis court in 2011. She asked me to play on her USTA tennis team! That was the beginning of tennis on Maui for me, and what fun for 11 years. We hiked, played, lunched, talked family, had authentic Hawaiian meals at her home. Thank you Edna, you are so missed as you were always a wonderful friend.Toni and Pete



Media

Edna L. Abe
JUL 14, 1959 - JAN 27, 2023



Liezl Lao shared a photo to the **Tribute Wall** album.

February 10 at 10:40 AM





Media

Edna L. Abe

JUL 14, 1959 - JAN 27, 2023



Nakamura Mortuary shared 5 photos to the **Memories Album** album.

February 8 at 2:17 PM



RA Rachel Adams February 11 at 9:21 AM
So sorry Abe Ohana loved your mom!



Media

Edna L. Abe
JUL 14, 1959 - JAN 27, 2023





Memories only last if you share them

Join us in honoring Edna by contributing to a collection of shared memories.



Scan to Visit



MAUI MEMORIAL PARK
NAKAMURA MORTUARY
CEMETERY, CREMATION & FUNERAL